

Changing
COBOTTA
Specification from
With Camera to
Without Camera

****Attention****

Read this resource material carefully and in its entirety before use, to ensure it is understood and used properly. Failure to properly follow the instructions in the resource materials DPAM provides may result in damage to your equipment. As a result, by using the resource materials, you are assuming the risks associated with modifying your equipment. DENSO holds no liability, implied or otherwise, for damage, injury or any legal responsibility incurred, directly or indirectly from the use of the resource materials, including any loss of data or damage to property which may occur by your use of the resource materials. The use of the resource materials are not recommended unless you have technical knowledge and functional experience with the equipment and related software. DENSO is unable to provide support, remote or otherwise, for the information included in the resource material, nor for the ancillary topics relating to the information included in the resource materials. Therefore, if you are not fully comfortable with it, we strongly recommend that you send your unit to one of our Regional Support Centers for repair. The information contained in the resource materials are subject to change at the sole discretion of DPAM.

Contents

1.1 Overview of Changing from With Camera to Without Camera Specification	4
1.2 Powering up the COBOTTA and connecting your PC.	5
1.3 Change the Posture of the COBOTTA so that the Camera can be removed.....	7
1.4 Edit the Parameters to complete the Specification Change.	9

1.1 Overview of Changing from With Camera to Without Camera Specification

Power up the COBOTTA Robot and connect your PC that has Virtual TP installed.



Remove the Camera, Camera Cable and Camera Stay.



Install the 6th Axis Connector Cover and the 6th Axis Stay Hole Cover.



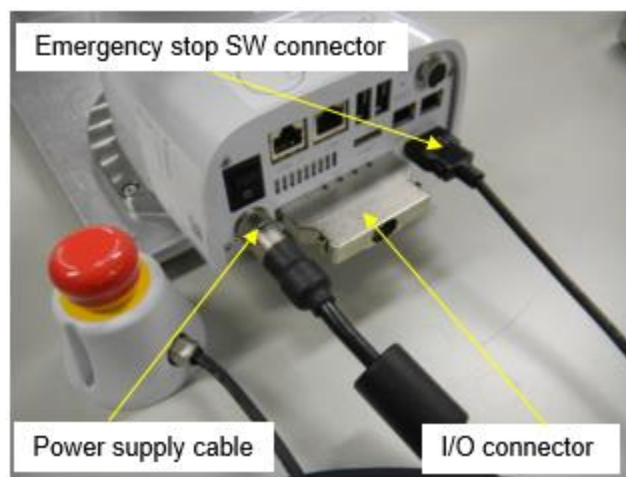
Edit the Parameters to disable the Camera function.

1.2 Powering up the COBOTTA and connecting your PC.

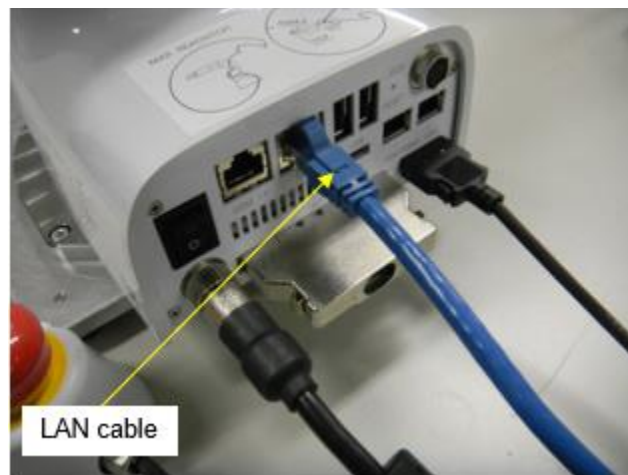
Caution- Before you begin-

- Turn off power to peripheral devices (equipment connected to the COBOTTA).
- WINCAPS III with Virtual TP must be installed on the PC.
- Set your static IP address within your PC to match the COBOTTA.
Example: COBOTTA IP **192.168.0.1** PC IP **192.168.0.2**

Step 1. Connect the Power Supply Cable, Emergency Stop Switch, and your I/O Connector to the COBOTTA.



Step 2. Connect to the COBOTTA with your PC using the LAN cable. This PC needs to have **WINCAPS III** with **Virtual TP** installed.



Step 3. Select **Maintainer** from the Virtual TP User Levels and use “**5593589**” as the password. Then choose **OK**.



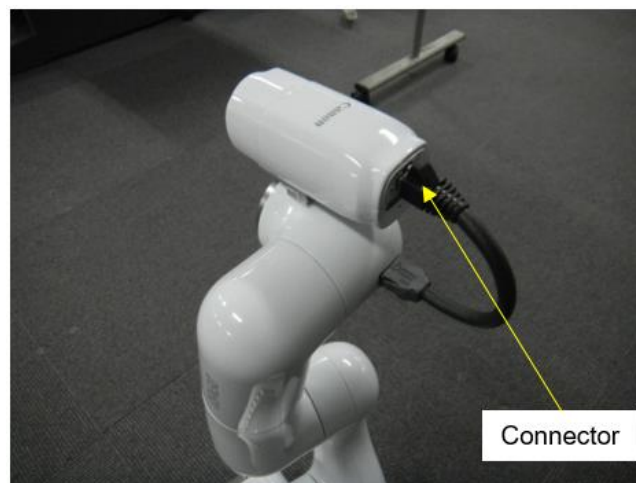
Enter password: 5593589.

1.3 Change the Posture of the COBOTTA so that the Camera can be removed.

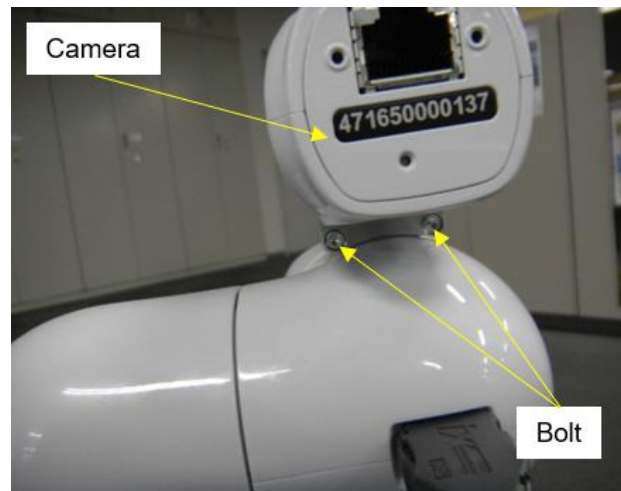
Step 1. Change the posture of the COBOTTA to a similar posture as pictured below, then turn the power to the COBOTTA to **Off**.



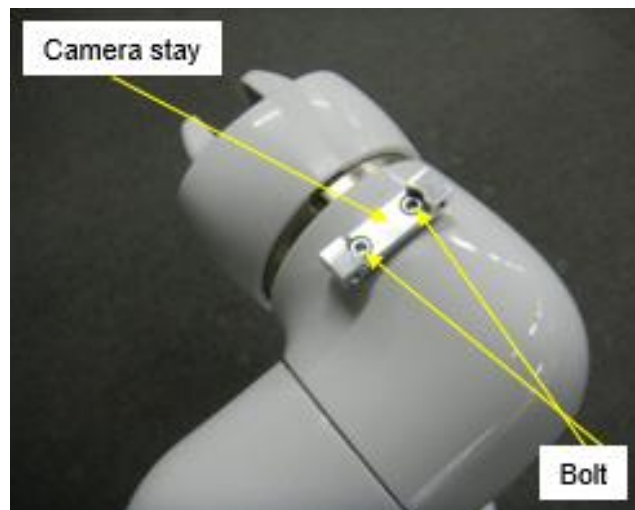
Step 2. Remove the cable that connects the Camera to the COBOTTA.



Step 3. Remove the (2) M3 bolts that secure the camera to the COBOTTA.



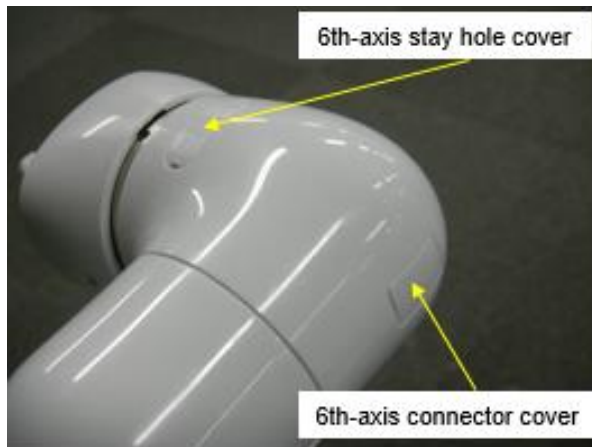
Step 4. Remove the Camera Stay by removing the two bolts.



Step 5. Attach the 6th Axis Connector Cover and the 6th Axis Stay Hole Cover.

6th axis stay hole cover part # **410381-9761**

6th axis connector cover part # **410381-9751**



1.4 Edit the Parameters to complete the Specification Change.

Step 1. Turn on the power to the COBOTTA and connect to it using the Virtual Teaching Pendant Log in as **Maintainer** and the password of **5593589**.

Step 2. Perform the following key strokes using the Virtual Teach Pendant to Disable the Camera.

"Setting" → "System info" → "VRC Setting" → Select 56th row →
"Edit" → Select "O : No Camera" → "OK" → "OK" → "OK"

Step 3. Turn the COBOTTA Power **Off**, wait at least 6 seconds then turn the power back **On**, the specification change is complete.

